



Established in 1979

ELETEX

GROUP OF COMPANIES



HIRE US

FOR YOUR NEXT
COMMERCIAL CONSTRUCTION
PROJECT

CONTACT



Tel: +65 63366042 | +65 63365471

Fax: +65 63376542



eletex@singnet.com.sg



94, Tagore Lane Singapore 787536

ELETEXSG.COM



SCAFFOLDING

MOM CERTIFIED
APPROVED SCAFFOLD CONTRACTOR (ASC)



Established in 1979

ELETEX
GROUP OF COMPANIES

ELETEXSG.COM

CONTACT



Tel: +65 63366042 | +65 63365471

Fax: +65 63376542



eletex@singnet.com.sg



94, Tagore Lane Singapore 787536



FUSIONOPOLIS BBR SINGAPORE PILING



Established in 1979

ELETEX
GROUP OF COMPANIES

ELETEXSG.COM

CONTACT



Tel: +65 63366042 | +65 63365471

Fax: +65 63376542



eletex@singnet.com.sg



94, Tagore Lane Singapore 787536



FUSIONOPOLIS BBR SINGAPORE PILING



Established in 1979

ELETEX
GROUP OF COMPANIES

ELETEXSG.COM

CONTACT



Tel: +65 63366042 | +65 63365471

Fax: +65 63376542



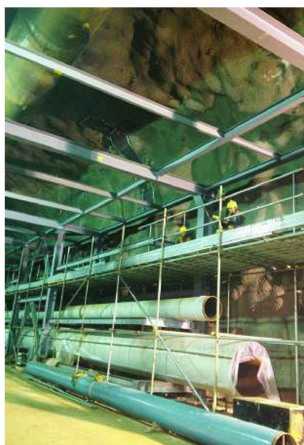
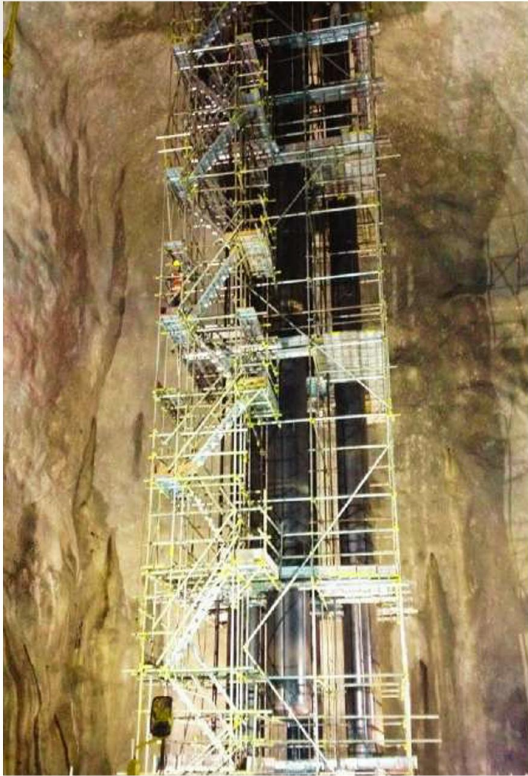
eletex@singnet.com.sg



94, Tagore Lane Singapore 787536



JURONG ROCK CAVERN PROJECT



Established in 1979

ELETEX
GROUP OF COMPANIES

ELETEXSG.COM

CONTACT



Tel: +65 63366042 | +65 63365471

Fax: +65 63376542



eletex@singnet.com.sg



94, Tagore Lane Singapore 787536



LINDE JURONG ISLAND



Established in 1979

ELETEX
GROUP OF COMPANIES

ELETEXSG.COM

CONTACT



Tel: +65 63366042 | +65 63365471

Fax: +65 63376542



eletex@singnet.com.sg



94, Tagore Lane Singapore 787536



HYUNDAI ENGINEERING & CONSTRUCTION CO . LTD



Established in 1979

ELETEX
GROUP OF COMPANIES

ELETEXSG.COM

CONTACT



Tel: +65 63366042 | +65 63365471

Fax: +65 63376542



eletex@singnet.com.sg



94, Tagore Lane Singapore 787536



THE INTERLACE



Established in 1979

ELETEX
GROUP OF COMPANIES

ELETEXSG.COM

CONTACT



Tel: +65 63366042 | +65 63365471

Fax: +65 63376542



eletex@singnet.com.sg



94, Tagore Lane Singapore 787536



MOM CERTIFIED APPROVED SCAFFOLD CONTRACTOR (ASC)

Eletex is an MOM-approved scaffold contractor providing system scaffold and tubular scaffold for construction sites and the oil and gas industry. We can provide manpower for your projects based on your requirements.

SCAFFOLDING SAFETY & RELIABILITY

We take pride in being awarded Bizsafe Level Star, and all designs are in accordance with ISO 9001 Certification.

Having a wide spectrum of clients, we support major players across a variety of sectors.



MOM Approved Scaffold Contractor

Established in 1979

ELETEX
GROUP OF COMPANIES

ELETEXSG.COM

CONTACT



Tel: +65 63366042 | +65 63365471

Fax: +65 63376542



eletex@singnet.com.sg



94, Tagore Lane Singapore 787536



REBAR

HOLISTIC SOLUTIONS FOR YOUR NEEDS



Established in 1979

ELETEX
GROUP OF COMPANIES

ELETEXSG.COM

CONTACT



Tel: +65 63366042 | +65 63365471

Fax: +65 63376542



eletex@singnet.com.sg



94, Tagore Lane Singapore 787536



REBAR SERVICES INCLUDE:

- Diaphragm Wall
- Guide Wall Column
- Core Cage
- Bored Pile Cage
- Beam Cage



Established in 1979

ELETEX
GROUP OF COMPANIES

ELETEXSG.COM

CONTACT



Tel: +65 63366042 | +65 63365471

Fax: +65 63376542



eletex@singnet.com.sg



94, Tagore Lane Singapore 787536



REBAR SERVICES INCLUDE:

- Diaphragm Wall
- Guide Wall Column
- Core Cage
- Bored Pile Cage
- Beam Cage



Established in 1979

ELETEX
GROUP OF COMPANIES

ELETEXSG.COM

CONTACT



Tel: +65 63366042 | +65 63365471

Fax: +65 63376542



eletex@singnet.com.sg



94, Tagore Lane Singapore 787536



REBAR SERVICES INCLUDE:

- Diaphragm Wall
- Guide Wall Column
- Core Cage
- Bored Pile Cage
- Beam Cage



Established in 1979

ELETEX
GROUP OF COMPANIES

ELETEXSG.COM

CONTACT



Tel: +65 63366042 | +65 63365471

Fax: +65 63376542



eletex@singnet.com.sg



94, Tagore Lane Singapore 787536



REBAR SERVICES INCLUDE:

- Diaphragm Wall
- Guide Wall Column
- Core Cage
- Bored Pile Cage
- Beam Cage



Established in 1979

ELETEX
GROUP OF COMPANIES

ELETEXSG.COM

CONTACT



Tel: +65 63366042 | +65 63365471

Fax: +65 63376542



eletex@singnet.com.sg



94, Tagore Lane Singapore 787536



SING TEC DEVELOPMENT PTE LTD PROJECT: ITTC C190



Established in 1979

ELETEX
GROUP OF COMPANIES

ELETEXSG.COM

CONTACT



Tel: +65 63366042 | +65 63365471

Fax: +65 63376542



eletex@singnet.com.sg



94, Tagore Lane Singapore 787536



SING TEC DEVELOPMENT PTE LTD PROJECT: ITTC C190



Established in 1979

ELETEX
GROUP OF COMPANIES

ELETEXSG.COM

CONTACT



Tel: +65 63366042 | +65 63365471

Fax: +65 63376542



eletex@singnet.com.sg



94, Tagore Lane Singapore 787536



SING TEC DEVELOPMENT PTE LTD PROJECT: ITTC C190

DRAINAGE WORKS



Established in 1979

ELETEX
GROUP OF COMPANIES

ELETEXSG.COM

CONTACT



Tel: +65 63366042 | +65 63365471

Fax: +65 63376542



eletex@singnet.com.sg

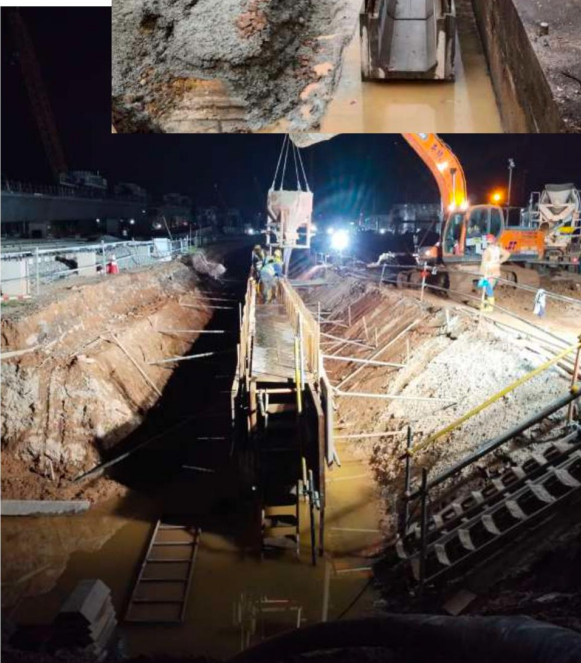
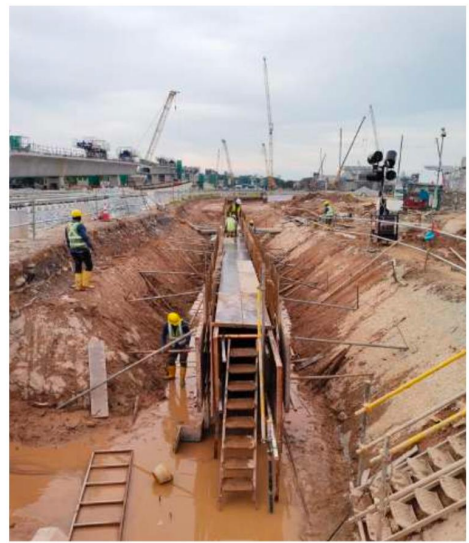


94, Tagore Lane Singapore 787536



SING TEC DEVELOPMENT PTE LTD PROJECT: ITTC C190

DRAINAGE WORKS



Established in 1979

ELETEX
GROUP OF COMPANIES

ELETEXSG.COM

CONTACT



Tel: +65 63366042 | +65 63365471

Fax: +65 63376542



eletex@singnet.com.sg



94, Tagore Lane Singapore 787536



SING TEC DEVELOPMENT PTE LTD PROJECT: ITTC C190

PILED ROAD



Established in 1979

ELETEX
GROUP OF COMPANIES

ELETEXSG.COM

CONTACT



Tel: +65 63366042 | +65 63365471

Fax: +65 63376542



eletex@singnet.com.sg

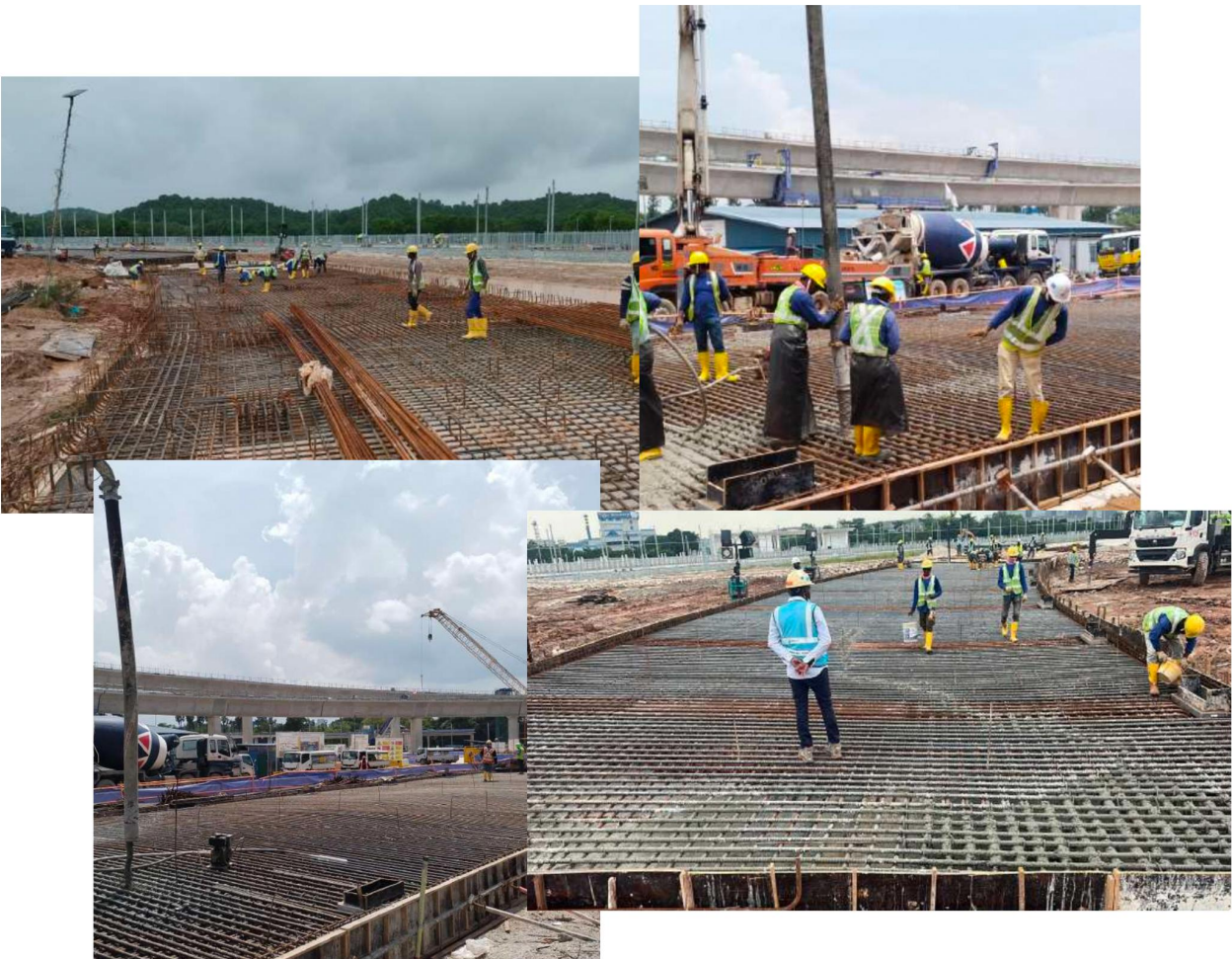


94, Tagore Lane Singapore 787536



SING TEC DEVELOPMENT PTE LTD PROJECT: ITTC C190

PILED ROAD



Established in 1979

ELETEX
GROUP OF COMPANIES

ELETEXSG.COM

CONTACT



Tel: +65 63366042 | +65 63365471

Fax: +65 63376542



eletex@singnet.com.sg



94, Tagore Lane Singapore 787536



SING TEC DEVELOPMENT PTE LTD PROJECT: ITTC C190

RIGID PAVEMENT



Established in 1979

ELETEX
GROUP OF COMPANIES

ELETEXSG.COM

CONTACT



Tel: +65 63366042 | +65 63365471

Fax: +65 63376542



eletex@singnet.com.sg



94, Tagore Lane Singapore 787536



KIAN HUP ENGINEERING PTE LTD PROJECT: DE 142 GALI BATU

BUS DEPOT



Established in 1979

ELETEX
GROUP OF COMPANIES

ELETEXSG.COM

CONTACT



Tel: +65 63366042 | +65 63365471

Fax: +65 63376542



eletex@singnet.com.sg



94, Tagore Lane Singapore 787536



BYO CONSTRUCTION PTE LTD PROJECT: J103 JS4 HONG KAH STATION



Established in 1979

ELETEX
GROUP OF COMPANIES

ELETEXSG.COM

CONTACT



Tel: +65 63366042 | +65 63365471

Fax: +65 63376542



eletex@singnet.com.sg



94, Tagore Lane Singapore 787536



REBAR WORK

We ensure high-quality fabrication of rebar through highly trained professionals. We provide a holistic solution to your rebar needs, with a ready pool of over 300 workers experienced in rebar fabrication.

At our esteemed company, we take immense pride in delivering unparalleled excellence in the field of rebar fabrication. Our primary goal is to guarantee the highest quality standards for all our clients, and we achieve this through the dedication and expertise of our highly trained professionals.



MOM Approved Scaffold Contractor

Established in 1979

ELETEX
GROUP OF COMPANIES

ELETEXSG.COM

CONTACT



Tel: +65 63366042 | +65 63365471

Fax: +65 63376542



eletex@singnet.com.sg

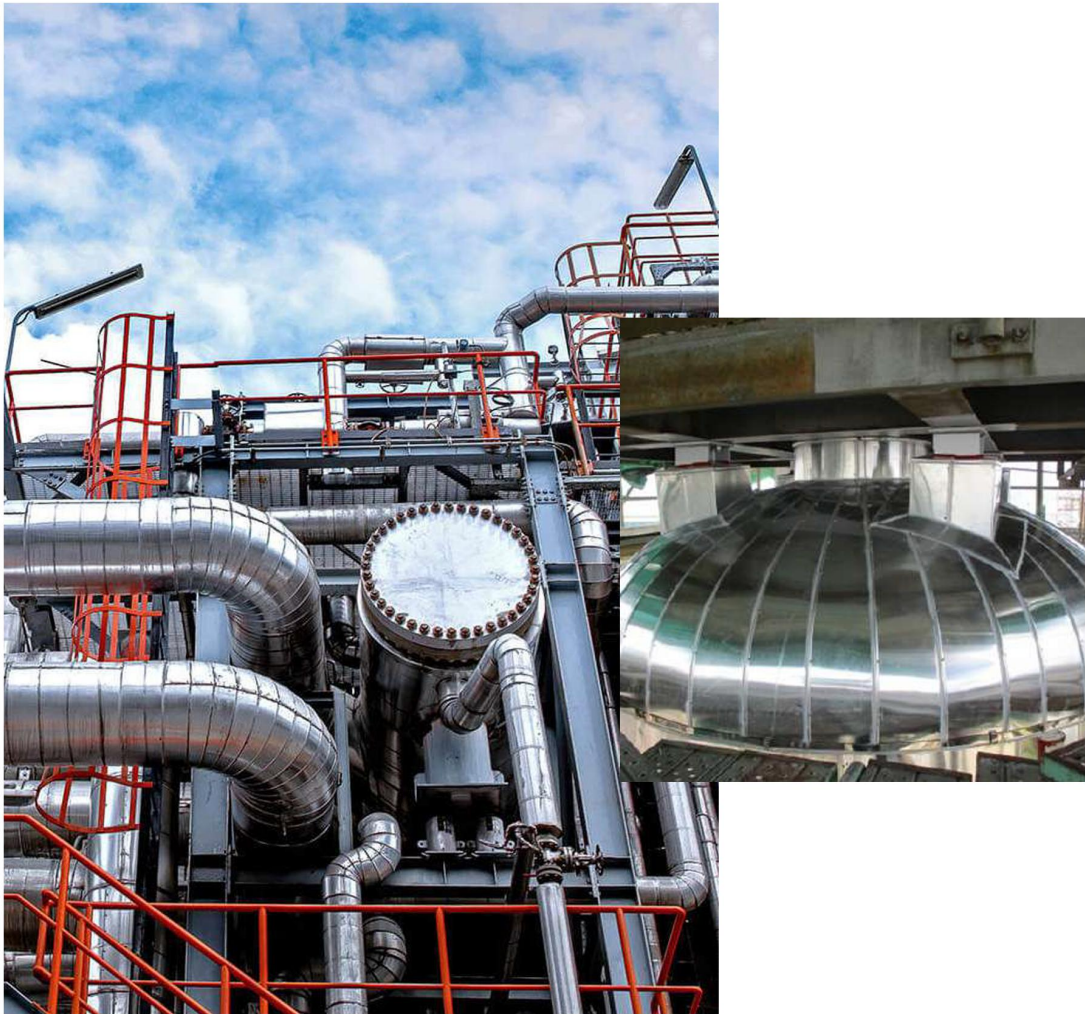


94, Tagore Lane Singapore 787536



INSULATION

SPECIALISE IN CHEMICAL PLANT INSULATION



Established in 1979

ELETEX
GROUP OF COMPANIES

ELETEXSG.COM

CONTACT



Tel: +65 63366042 | +65 63365471

Fax: +65 63376542



eletex@singnet.com.sg



94, Tagore Lane Singapore 787536



COMPLETE PACKAGE

- Thermal Insulation
- Pyrogenic Cyrogenic & Rockwool insulation
- Asbestos Management & Removal
- Sheet Metal Fabrication



Established in 1979

ELETEX
GROUP OF COMPANIES

ELETEXSG.COM

CONTACT



Tel: +65 63366042 | +65 63365471

Fax: +65 63376542



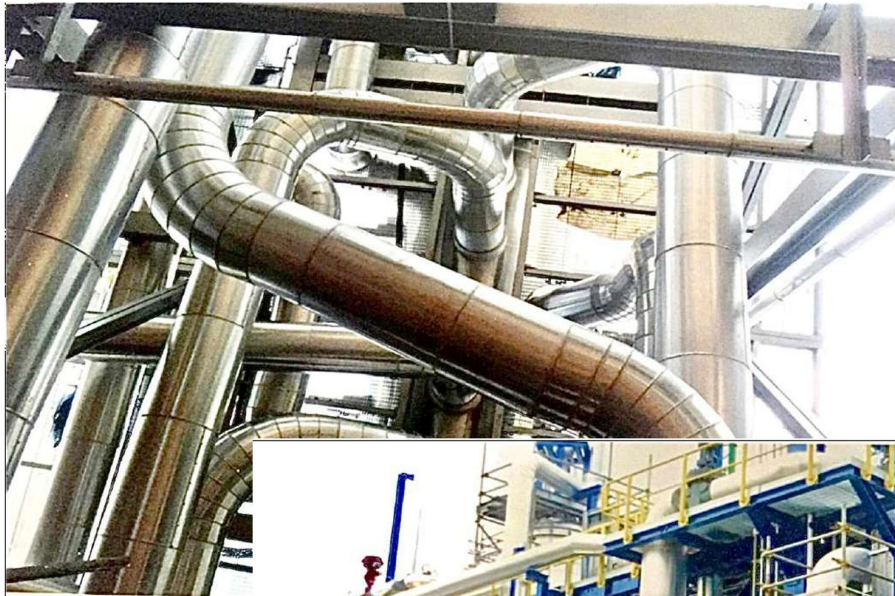
eletex@singnet.com.sg



94, Tagore Lane Singapore 787536



SITE LOCATION HERMES PROJECT IN JURONG ISLAND



Established in 1979

ELETEX
GROUP OF COMPANIES

ELETEXSG.COM

CONTACT



Tel: +65 63366042 | +65 63365471

Fax: +65 63376542



eletex@singnet.com.sg



94, Tagore Lane Singapore 787536



SITE LOCATION JURONG ISLAND SHELL SERAYA



PIPE SURFACE



Established in 1979

ELETEX
GROUP OF COMPANIES

ELETEXSG.COM

CONTACT



Tel: +65 63366042 | +65 63365471

Fax: +65 63376542



eletex@singnet.com.sg



94, Tagore Lane Singapore 787536



SITE LOCATION JURONG ISLAND SHELL SERAYA



INSULATION



Established in 1979

ELETEX
GROUP OF COMPANIES

ELETEXSG.COM

CONTACT



Tel: +65 63366042 | +65 63365471

Fax: +65 63376542



eletex@singnet.com.sg



94, Tagore Lane Singapore 787536



SITE LOCATION JURONG ISLAND SHELL SERAYA



INSULATION CLADDING



Established in 1979

ELETEX
GROUP OF COMPANIES

ELETEXSG.COM

CONTACT



Tel: +65 63366042 | +65 63365471

Fax: +65 63376542



eletex@singnet.com.sg



94, Tagore Lane Singapore 787536



STEEL FABRICATION

MINOR STEEL CONSTRUCTION AND STEEL WORKS



Established in 1979

ELETEX
GROUP OF COMPANIES

ELETEXSG.COM

CONTACT



Tel: +65 63366042 | +65 63365471

Fax: +65 63376542



eletex@singnet.com.sg



94, Tagore Lane Singapore 787536



STEEL FABRICATION

We have experience in fabricating and erecting warehouses, factory sheds, process structures, roofing, wall cladding, platforms, stairways, walkways, and all types of temporary structures.

With vast experience in application methods, we provide extensive solutions for painting work in the oil and gas industry. Our experienced coating inspectors ensure that all the work is carried out in accordance with our clients' specifications.



Established in 1979

ELETEX
GROUP OF COMPANIES

ELETEXSG.COM

CONTACT



Tel: +65 63366042 | +65 63365471

Fax: +65 63376542



eletex@singnet.com.sg



94, Tagore Lane Singapore 787536

PROJECT REFERENCE

S/N	Job Title	Client	Project Value	Start Date	End Date
1	Supply Labour Sub-contract work @ UMC project	Topweld Engineering Pte Ltd	S\$150,000.00 One Hundred Fifty Thousand (Estimate until Dec 2023)	August 2023	On-going Project
2	Sub-contract work : Construction of Rigid Pavement and Pile Road Slab Work (ITTC)	Sing Tec Development Pte Ltd	S\$1,706,035.00 One Million Seven Hundred Six Thousand Thirty Five	March 2023	On-going Project
3	Sub-contract work : supply labour, formwork and falsework for RCU Drainage (ITTC)	Sing Tec Development Pte Ltd	S\$200,000.00 Two Hundred Thousand	October 2022	On-going Project
4	Supply Labour Sub-contract work in Jurong Island	Altrad Services Singapore	S\$842,000.00 Eight Hundred Forty Two Thousand	November 2022	September 2023
5	Supply Labour Sub-contract work @ Various Sites	CPC Asia Pte Ltd	S\$1,600,000.00 One Million Six Hundred Thousand (Estimate until Dec 2023)	June 2022	On-going Project
6	Supply Labour Sub-contract work @ Various Sites	C&C Contractor Pte Ltd	S\$1,000,000.00 One Million (Estimate until Dec 2023)	June 2022	On-going Project
7	Supply Labour : Sub-contract work @ Various Sites	Falkor Engineering Services Pte Ltd	S\$340,000.00 Three Hundred Forty Thousand	November 2021	September 2023
8	Scaffolding Works in ECC CUI, Pulau Bukom	Altrad Services Singapore	S\$2,287,000.00 Two Million Two Hundred Eighty Seven Thousand	September 2021	September 2023
9	Supply Cleaners and Cleaning works at Metro Woodland	Metro (Private) Ltd	S\$504,000.00 Five Hundred Four Thousand (Estimate until Dec 2023)	July 2018	On-going Project
10	Supply Cleaners and Cleaning works at Metro Paragon	Metro (Private) Ltd	S\$528,000.00 Five Hundred Twenty Eight Thousand (Estimate until Dec 2023)	July 2018	On-going Project
11	Scaffolding Works at Grand Hyatt	Truwater Singapore Pte Ltd	S\$22,500.00 Twenty Two Thousand Five Hundred	March 2023	April 2023
12	Supply Labour Sub-contract work @ Tuas One	Akoh Welfit Engineering Pte Ltd	S\$113,064.00 One Hundred Thirteen Thousand Sixty Four	September 2022	March 2023

PROJECT REFERENCE

S/N	Job Title	Client	Project Value	Start Date	End Date
13	Supply Labour Sub-contract work @ PFIZER	UTOE Engineering Pte Ltd	S\$338,000.00 Three Hundred Thirty Eight Thousand (Estimate until Dec 2023)	June 2022	November 2022
14	Supply Labour Sub-contract work in Jurong Island	Matha Engineering Pte Ltd	S\$75,000.00 Seventy Five Thousand	May 2022	September 2022
15	Supply Labour Sub-contract work @ Various Sites	Aerostar Corporation Pte Ltd	S\$200,000.00 Two Hundred Thousand	April 2022	December 2022
16	Supply Labour Sub-contract work @ Various Sites	Rotary Mechanical & Construction Company (Pte) Ltd	S\$485,000.00 Four Hundred Eighty Five Thousand	March 2022	September 2022
17	Supply Labour Sub-contract work @ JPTT and Shell Bukom Project	Rotary Engineering Pte Ltd	S\$136,000.00 One Hundred Thirty Six Thousand	March 2022	July 2022
18	Supply Labour Sub-contract work @ Neste Project, Jurong Island and PFIZER, API	Rotary Electrical & Instrumentation Pte Ltd	S\$1,016,000.00 One Million Sixteen Thousand	February 2022	January 2023
19	Supply Labour in Tuas (ITTC Project)	Sing Tec Development Pte Ltd	S\$200,000.00 Two Hundred Thousand	January 2022	April 2023
20	Cutting and Bending Works in Tuas (ITTC Project)	GS Engineering & Construction Corp	S\$1,048,000.00 One Million Forty Eight Thousand	December 2021	September 2022
21	Supply Labour in Woodlands Terrace	Takasago Singapore Pte Ltd	S\$48,000.00 Forty Eight Thousand	November 2021	July 2022
22	Supply Labour at Various Locations	Truwater Singapore Pte Ltd	S\$302,000.00 Three Hundred Two Thousand	October 2021	August 2022
23	Supply Labour Sub-contract work @ Jurong Port Terminal	Rotary-Thai Construction Pte Ltd	S\$400,000.00 Four Hundred Thousand	July 2021	January 2022
24	Supply Labour Sub-contract work @ Various Sites	Rotary IMC Pte Ltd	S\$650,000.00 Six Hundred Fifty Thousand	March 2021	July 2022
25	Supply Labour Sub-contract work @ Sebarok Island	Rotary IMC Pte Ltd	S\$654,000.00 Six Hundred Fifty Four Thousand	September 2020	September 2021
26	Supply Labour for Supervisor & General Work in 30 Sunview Way	Top Pave Pte Ltd	S\$773,000.00 Seven Hundred Seventy Three Thousand	March 2020	October 2022

PROJECT REFERENCE

S/N	Job Title	Client	Project Value	Start Date	End Date
27	Supply Labour Sub-contract work @ Various Sites	ASP2 Construction Pte Ltd	S\$2,780,000.00 Two Million and Seven Hundred Eighty Thousand	February 2020	January 2023
28	Supply Labour for Scaffolding Work in Jurong Port MH1	2K International Pte Ltd	S\$300,000.00 Three Hundred Thousand	January 2020	September 2021
29	Supply Labour for Rebar & Form Work in Woodlands Ave 9	ALN Engineering Pte Ltd	S\$350,000.00 Three Hundred Fifty Thousand	January 2020	January 2021
30	Scaffolding Works in ECC CUI, Pulau Bukom	Multi Height Scaffolding Pte Ltd	S\$800,000.00 Eight Hundred Thousand	November 2019	September 2021
31	Supply Labour for General Work in Changi East Close	Innoveng Engineering & Construction Pte Ltd	S\$620,000.00 Six Hundred Twenty Thousand	September 2019	January 2022
32	Supply Labour for Rebar Work in Tampines St. 34	Global Civil Engineering Pte Ltd	S\$200,000.00 Two Hundred Thousand	September 2019	January 2021
33	Supply General Worker at 30D Quality Rd	CW Construction Pte Ltd	S\$250,000.00 Two Hundred Fifty Thousand	July 2019	March 2020
34	Erection & Dismantle of Scaffold works at Robinson Rd	SK Yeo Construction Pte Ltd	S\$300,000.00 Three Hundred Thousand	July 2019	December 2019
35	Supply General Worker at Jewel Changi	ISG Asia (S) Pte Ltd	S\$150,000.00 One Hundred Fifty Thousand	May 2019	July 2019
36	Supply Labour for Rebar Work in Bedok Ria Crescent	Back E&C PTE LTD	S\$1,593,000.00 One Million Five Hundred Ninety Three Thousand	March 2019	April 2022
37	Supply Labour for Rebar Work in Punggol Way (North Shore walk)	KEN-PAL (S) PTE LTD	S\$650,000.00 Six Hundred Fifty Thousand	March 2019	January 2020
38	Supply painting works (Blaster) for Bukom Island	Rotary Mechanical & Construction Company (Pte) Ltd	S\$120,000.00 One Hundred Twenty Thousand	January 2019	
39	Supply Labour Sub-contract work @ 40 Tuas	Hai Leck Engineering & Construction Pte Ltd	S\$730,100.00 Seven Hundred Thirty Thousand and One Hundred	January 2019	February 2021
40	Supply Labour for Rebar Work in Tampines Ave 6	Jian An Building Construction Pte Ltd	S\$320,000.00 Three Hundred Twenty Thousand	December 2018	December 2019

PROJECT REFERENCE

S/N	Job Title	Client	Project Value	Start Date	End Date
41	Supply Labour for Rebar Work in Benoi Crescent	Super Bend Pte Ltd	S\$300,000.00 Three Hundred Thousand	December 2018	December 2019
42	Scaffolding, Painting and Insulation Works In Various Locations, Pulau Bukom VO Issued on 5th November 2018	Hertel Singapore Pte Ltd	S\$1,690,941.90 One Million and Six Hundred Ninety Thousand Nine Hundred Forty One and Cents ninety one	November 2018	June 2019
43	Supply Labour for Scaffolding Work in Bukom Island	Mun Siong Engineering Limited	S\$1,015,000.00 One Million Fifteen Thousand	September 2018	June 2023
44	Supply Labour for Scaffolding Work in Jurong Island	Multi Height Scaffolding Pte Ltd	S\$94,090.00 Ninety Four Thousand Ninety Only	September 2018	September 2021
45	Supply Cleaners and Cleaning works at Metro Centrepoint	Metro (Private) Ltd	S\$456,000.00 Four Hundred Fifty Six Thousand	July 2018	June 2020
46	Scaffolding Works at National University Hospital	Highness Electrical Engineering Pte Ltd	S\$38,100.00 Thirty Eight Thousand and One Hundred	July 2018	August 2018
47	Supply Labour for Scaffolding Work in Jurong Island	Kok Chang Scaffolding Pte Ltd	S\$89,838.00 Eighty Nine Thousand Eight Hundred Thirty Eight	July 2018	October 2018
48	Supply of Excavator/Rebar & General Worker in Pulau Bukom	Mighty Engineering & Construction Pte Ltd	S\$212,000.00 Two Hundred Twelve Thousand	June 2018	September 2018
49	Scaffolding Works in ECC CUI, Pulau Bukom	Cape East Pte Ltd	S\$2,200,000.00 Two Million Two Hundred Thousand	May 2018	August 2021
50	Fabrication for Diaphragm wall and Guide wall construction at DTSS-07	Sambo E&C Co. Ltd	S\$225,000.00 Two Hundred Twenty Five Thousand	March 2018	January 2019
51	Scaffolding and Painting Works in Various Locations, Pulau Bukom	Hertel Singapore Pte Ltd	S\$1,773,000.00 One Million and Seven Hundred Seventy Three Thousand	October 2017	December 2018
52	Scaffolding Works in Interphase CUI, Pulau Bukom	Hertel Singapore Pte Ltd	S\$500,378.00 Five Hundred Thousand and Three Hundred Seventy Eight	October 2017	June 2018
53	To supply Labour, Tools, and Tiewire for Rebar fixing at Phase II Changi Water Reclamation Plant Expansion	CPC Construction Pte Ltd	S\$480,000.00 Four Hundred Eighty Thousand	May 2017	August 2017

PROJECT REFERENCE

S/N	Job Title	Client	Project Value	Start Date	End Date
54	Supply Labour for Insulation Work in Bukom Island	Industrial Sevice (Pte) Limited	S\$114,315.00 One Hundred Fourteen Thousand Three Hundred Fifteen	February 2017	April 2017
55	Scaffolding Works in Various Location, Pulau Bukom	Hertel Singapore Pte Ltd	S\$730,100.00 Seven Hundred Thirty Thousand and One Hundred	January 2017	September 2017
56	Insulation works at MEG & CUI, Seraya Jurong Island	Hertel Singapore Pte Ltd	S\$952,900.00 Nine Hundred Fifty Two Thousand and Nine Hundred	September 2016	December 2018
57	Insulation works for turn around maintenance work at ECC CUI PH1B for Shell Singapore at Pulau Bukom	Hertel Singapore Pte Ltd	S\$1,780,000.00 One Million and Seven Hundred Eighty Thousand	August 2016	January 2017
58	Erection & Dismantle of Scaffold works for LISP Expansion Project at Jurong Island	SMCC Overseas Singapore Pte Ltd	S\$250,000.00 Two Hundred Fifty Thousand	August 2016	October 2017
59	Piping and Steel Structure work at Jurong Island AS01 & AS03 Hyundai Project	GRK Engineering & Management Pte Ltd	S\$1,100,000.00 One Million and One Hundred Thousand	July 2016	April 2017
60	Scaffolding, Insulation & Painting works for turn around maintenance work at ECC CUI PH1A for Shell Singapore at Pulau Bukom	Hertel Singapore Pte Ltd	S\$1,700,000.00 One Million and Seven Hundred Thousand	February 2016	August 2016
61	TTP 1 Rebar work and Installation of Metal Works Roofing with column gate house and gate gantry at Tuas Terminal Phase 1	Diap Daelim JV Pte Ltd	S\$1,200,000.00 One Million and Two Hundred Thousand	January 2016	February 2018
62	Fabrication of Rebar Cage for Bored Pile, Contract T3008 Advance work at Depot 20 Koh Sek Lim Rd	GS Engineering & Construction Corp / DooRee Engineering & Trading Pte Ltd	S\$4,664,000.00 Four Million and Six Hundred Sixty Four Thousand	October 2015	March 2018
63	Scaffolding works for turn around maintenance work at CD05, HVU05 for Shell Singapore at Pulau Bukom	Hertel Singapore Pte Ltd	S\$790,000.00 Seven Hundred Ninety Thousand	May 2015	September 2015
64	Installation of Cladding and Insulated pipes and fitting at Vopak Sebarok	Hertel Singapore Pte Ltd	S\$61,000 Sixty One Thousand	May 2015	June 2015
65	External Scaffold at proposed 5 storey Residential Flat at No. 50 Lorong G, Telok Kurau	BNF Services Pte Ltd	S\$25,000.00 Twenty Five Thousand	March 2015	June 2015

PROJECT REFERENCE

S/N	Job Title	Client	Project Value	Start Date	End Date
66	Various Sub Contract works for ECC-DBN Project at Shell, Pulau Bukom	Hertel Singapore Pte Ltd	S\$195,000.00 One Hundred Ninety Five Thousand	November 2014	January 2015
67	Insulation works for Shell Singapore for ECC Debottlenecking and Flare revamp Project at Shell Singapore at Pulau Bukom	Hertel Singapore Pte Ltd	S\$695,000.00 Six Hundred Ninety Five Thousand	September 2014	December 2014
68	External Scaffolding works for proposed Gems World Academy at Yishun Ave 7	Skya Construction Pte Ltd	S\$175,000.00 One Hundred Seventy Five Thousand	June 2014	December 2014
69	External Scaffolding works at 3 storey Electrical sub-station at Sunview way I Sunview way II	Yong Xing Construction Pte Ltd	S\$350,000.00 Three Hundred Fifty Thousand	June 2014	March 2015
70	Jurong Rock Cavern Phase 1B Project Provision of Scaffolding works for operation and construction area at Level 0 and Level 1 area for steel structure and piping works	Woolim Plant Engineering & Construction Co., Ltd	S\$1,500,000.00 One Million and Five Hundred Thousand	May 2014	December 2015
71	Jurong Rock Cavern Phase 1B Project Scaffolding for Electrical, Instrumentation, Civil and Structural works	Hyundai Engineering & Construction Pte Ltd	S\$1,000,000.00 Singapore Dollar One Million	May 2014	December 2015
72	Fabrication and Insulation works at Jurong Aromatic Project at Tembusu Avenue in Jurong Island	Kukjae Singapore Pte Ltd	S\$660,000.00 Six Hundred Sixty Thousand	March 2014	July 2014
73	Provision of labour for Dismantling of External scaffold for 4 Blocks Bartley / How Sun Road	Transvert Scaffold and Engineering Pte Ltd	S\$250,000.00 Two Hundred Fifty Thousand	February 2014	May 2014
74	External Scaffolding for proposed new factory and dormitory at Senoko Road	TC 3 Development Pte Ltd	S\$105,000.00 One Hundred Five Thousand	December 2013	March 2014
75	External and Internal Scaffolding works for proposed new erection for the mix use development comprising of Business Park Retail Block, office Block and Basement carpark at Fusionpolis Phase 5 at Fusionpolis Place	BBR Singapore & Development Pte Ltd	S\$1,200,000.00 One Million and Two Hundred Thousand	November 2013	January 2015
76	Insulation work for SLNG Project at 2nd Berth Pipe Insulation works at Jurong Island	Daeah Singapore Pte Ltd	S\$500,000.00 Five Hundred Thousand	October 2013	January 2014
77	External and Internal Scaffolding works at Indian Heritage Centre at Clive Street	Yong Xing Construction Pte Ltd	S\$250,000.00 Two Hundred Fifty Thousand	September 2013	July 2014

PROJECT REFERENCE

S/N	Job Title	Client	Project Value	Start Date	End Date
78	External scaffolding works at proposed additions and alternations to existing Market and Hawker Centre at Tanjong Pagar Plaza	Yong Xing Construction Pte Ltd	S\$68,000 Sixty Eight Thousand	September 2013	November 2013
79	External Scaffolding at Mattar Road MRT Project at DTL 3 C 10091A Circuit Road	Samdaiyang Development Co, Ltd	S\$75,000 Seventy Five Thousand	August 2013	October 2013
80	External Scaffolding works at proposed Woodlands SPPA Substation and MRT substation	Yong Xing Construction Pte Ltd	S\$55,000 Fifty Five Thousand	August 2013	October 2013
81	Provision of tower access scaffold at Gems World Academy at Yishun 7	Anchorage Construction Co, Pte Ltd	S\$120,000.00 One Hundred Twenty Thousand	August 2013	December 2013
82	External scaffolding works for Singapore Polytechnic Nanyang Technological University and Ai Tong School	Zheng Keng Engineering and Construction Pte Ltd	S\$650,000.00 Six Hundred Fifty Thousand	July 2013	December 2015
83	External Scaffold and Tower access at Davien Vopak at Tembusu Avenue, Jurong Island	2K Builders Pte Ltd	S\$250,000.00 Two Hundred Fifty Thousand	June 2013	June 2014
84	Scaffolding and safety management works at Gems World Academy at Yishun Ave. 7	Sumitomo Mitsui Construction Co, Ltd	S\$1,000,000.00 Singapore Dollar One Million	May 2013	December 2015
85	External scaffolding works at 10-storey flatted buiding at Havelock Road	Paul Y Construction and Engineering Pte Ltd	S\$106,000.00 One Hundred Six Thousand	April 2013	September 2013
86	Jurong Rock Carven Phase 1A Project Scaffolding for Electrical and structural work at UG (Underground) Area	Hyundai Engineering & Construction Pte Ltd	S\$1,500,000.00 One Million and Five Hundred Thousand	December 2012	June 2014
87	Jurong Rock Carven Phase 1A Project Scaffolding works for Installation of steel structure, equipment and piping for UG (Underground) Area	Woolim Plant Engineering & Construction Co., Ltd	S\$2,000,000.00 Singapore Dollar Two Million	August 2012	May 2014
88	Various site and safety management works at Chung Chun project at Banyan Avenue, Jurong Island	Sumitomo Mitsui Construction Co, Ltd	S\$850,000.00 Eight Hundred Fifty Thousand	January 2012	September 2012
89	Various site and safety management works at proposed Stamford America International School at Upper Serangoon Road	Sumitomo Mitsui Construction Co, Ltd	S\$1,200,000.00 One Million and Two Hundred Thousand	August 2011	December 2011
90	External scaffold at proposed wafer factory Building at Tampines Industrial Avenue 5	M+W Singapore Pte Ltd	S\$138,000.00 One Hundred Thirty Eight Thousand	August 2011	October 2011

PROJECT REFERENCE

S/N	Job Title	Client	Project Value	Start Date	End Date
91	External scaffold for Commercial Building at Serangoon North Ave 4	Hitachi Plant Technologies Ltd	S\$660,000.00 Six Hundred Sixty Thousand	June 2011	December 2011
92	Fabrication, Piping and Insulation work for Singapore Oxygen Air Liquid Pte Ltd at Tembusu Ave in Jurong Island	Soxal Singapore Oxygen Air Liquid Pte Ltd	S\$1,800,000.00 One Million and Eight Hundred Thousand	March 2010	December 2010
93	External scaffold works for Roof Access work at Retail Promenade at Marina bay Sands	Alfasi Construction (Singapore) Pte Ltd	S\$68,000 Sixty Eight Thousand	January 2010	February 2010